

Kinnegrip.

SAFETY ON THE ROAD

Product Catalog

Locking and safety solutions for transportation of goods

Ver 2023.2 En

C10 Curtainsider

Curtainsider for vehicles with
a full side curtain



COMPANY

Kinnegrip

Kinnegrip, a Swedish company established in 1966, that develops, manufactures and markets locking and safety solutions for commercial vehicles. We have a long experience in developing and producing user friendly and safe solutions for transportation of goods.

Our head office and production is located in LIDKÖPING, Sweden with local sales offices in Germany and Italy. We have a well-established network of distributors in Europe and Asia. 95% of our business is exported.

Our technical expertise, long experience and flexible production enables us to provide our customers with standardized as well as customized solutions to fit their needs. Our production takes place in-house, using the latest production techniques. All to ensure that our customers receive products of the highest quality standards and performance.

With Kinnegrip as your supplier, you get a committed partner and user friendly and high quality products.

Read more at www.kinnegrip.se



Our solutions

Kinnegrip offers locking and safety solutions in steel and aluminium for commercial vehicles, with the end user in focus.

- K pillars**
Dropside and pendulum pillar systems for medium and heavy commercial vehicles.
- T50**
Dropside lock systems for light commercial vehicles.
- C10 pillars**
Pillars for Curtainsider.

CONTENTS

Company	2
Curtainsider	4
Functionality	5
Flexibility	6
Overview	8
Functionality and safety	10
Product data	12
Accessories	14
Material	19
Contact	20



Our ambition - safe locking solutions with the end user in focus

KINNEGRIP

C10 Curtainsider

C10 is a safe and user friendly pillar system for curtainsiders.

The C10 pillar system offers a wide range of flexible solutions, including fixed, telescopic and spring-loaded tops, as well as different rollers. The pillar is made of high strength low alloy (HSLA) steel and tested according to EN12642. C10 can easily be customized to meet specific vehicle requirements.

- Single-handed operation
- A flexible pillar with a variety of combinations
- The roller design allows easy sideways pillar movement
- Combination options allow easy pillar height adjustment
- The support allows low height side raves.



Functionality

C10 can be fitted at any desired height. The roller is located at the upper part of the pillar's top profile and runs in the roof profile. The support is welded or bolted to the side rave. C10 can be fitted with a fixed, telescopic or spring-loaded top. When the pillar is fitted with a spring-loaded top, the pillar appears weightless during handling.

The roller design allows easy sideways pillar movement. Pillar length can be adjusted from ground level using a built-in adjustable ladder.



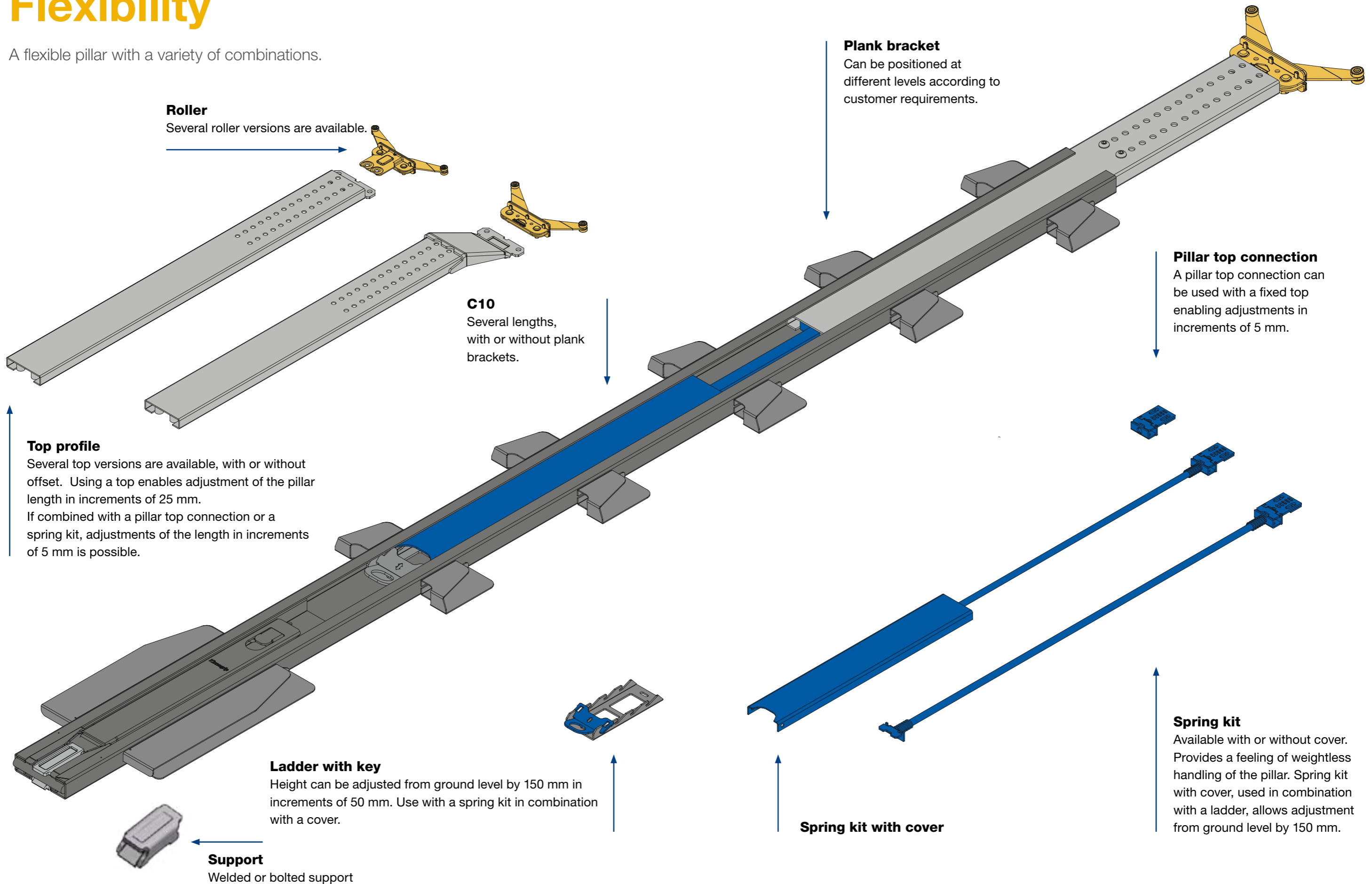
Design and safety

Single-handed operation with built-in safety catch enables easy and safe operation. The pillar height can be adjusted via various functions and accessories.

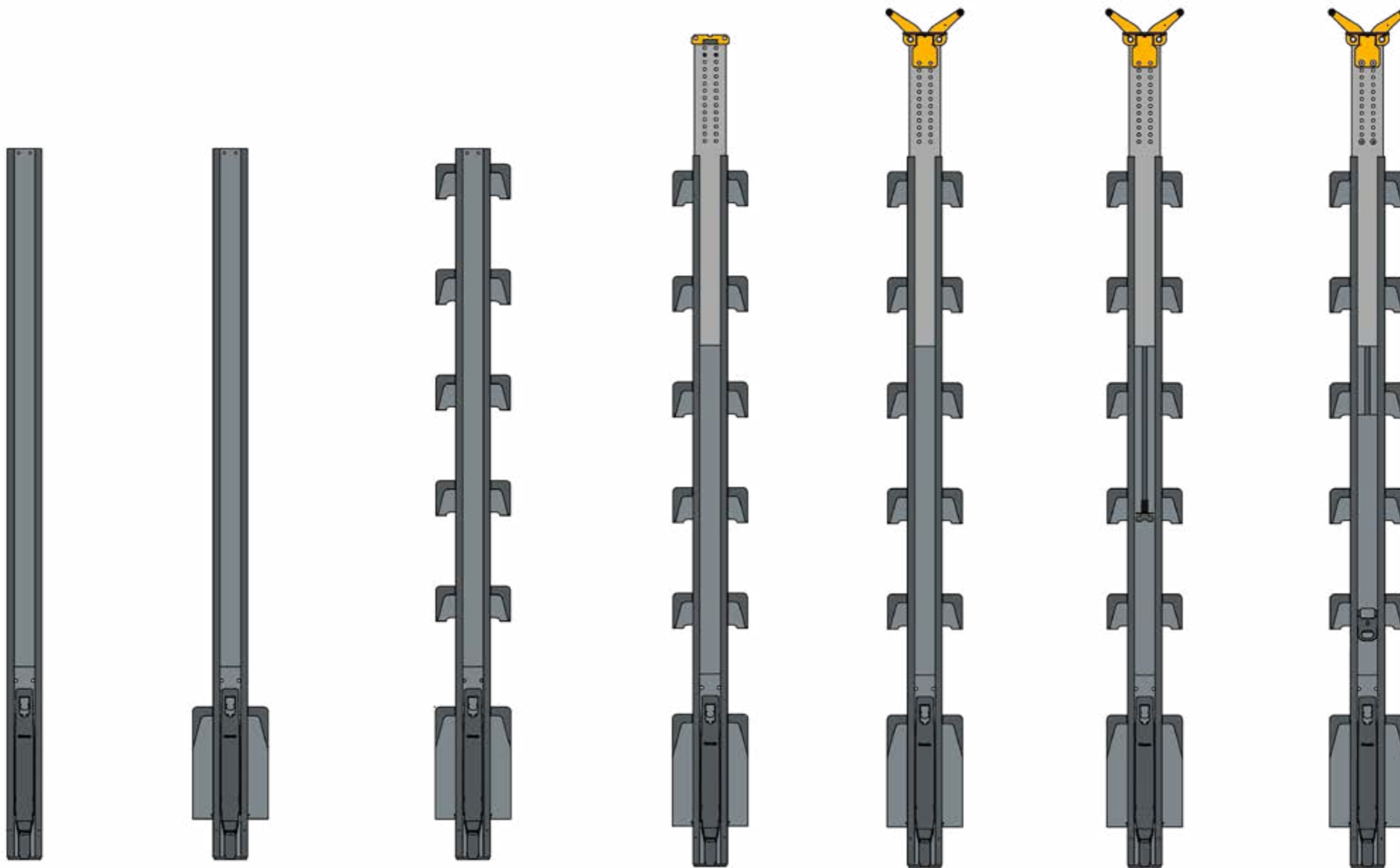
Spring kit enables the roof to be raised and gives a sense of weightless handling. The support allows low height side raves.

Flexibility

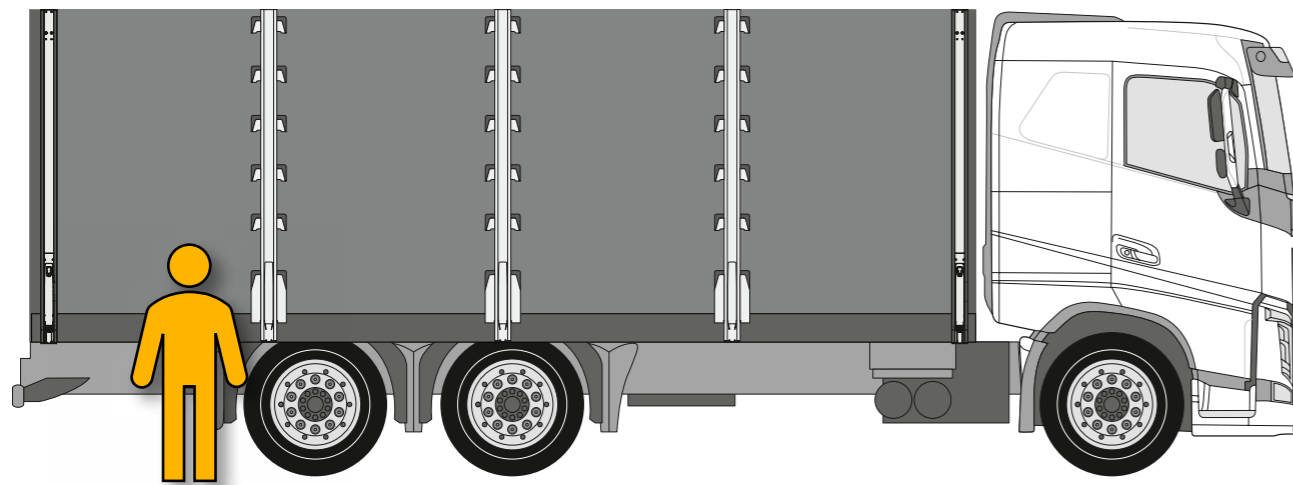
A flexible pillar with a variety of combinations.



Curtainside overveiw

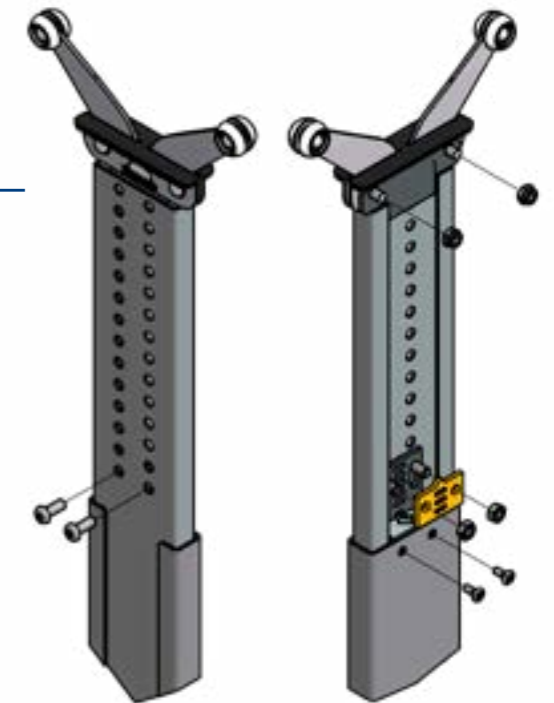


Funktionalität und safety



Height adjustment from ground level

Height adjustment with key from ground level by 150 mm in steps of 50 mm. Used with spring kit in combination with a cover.



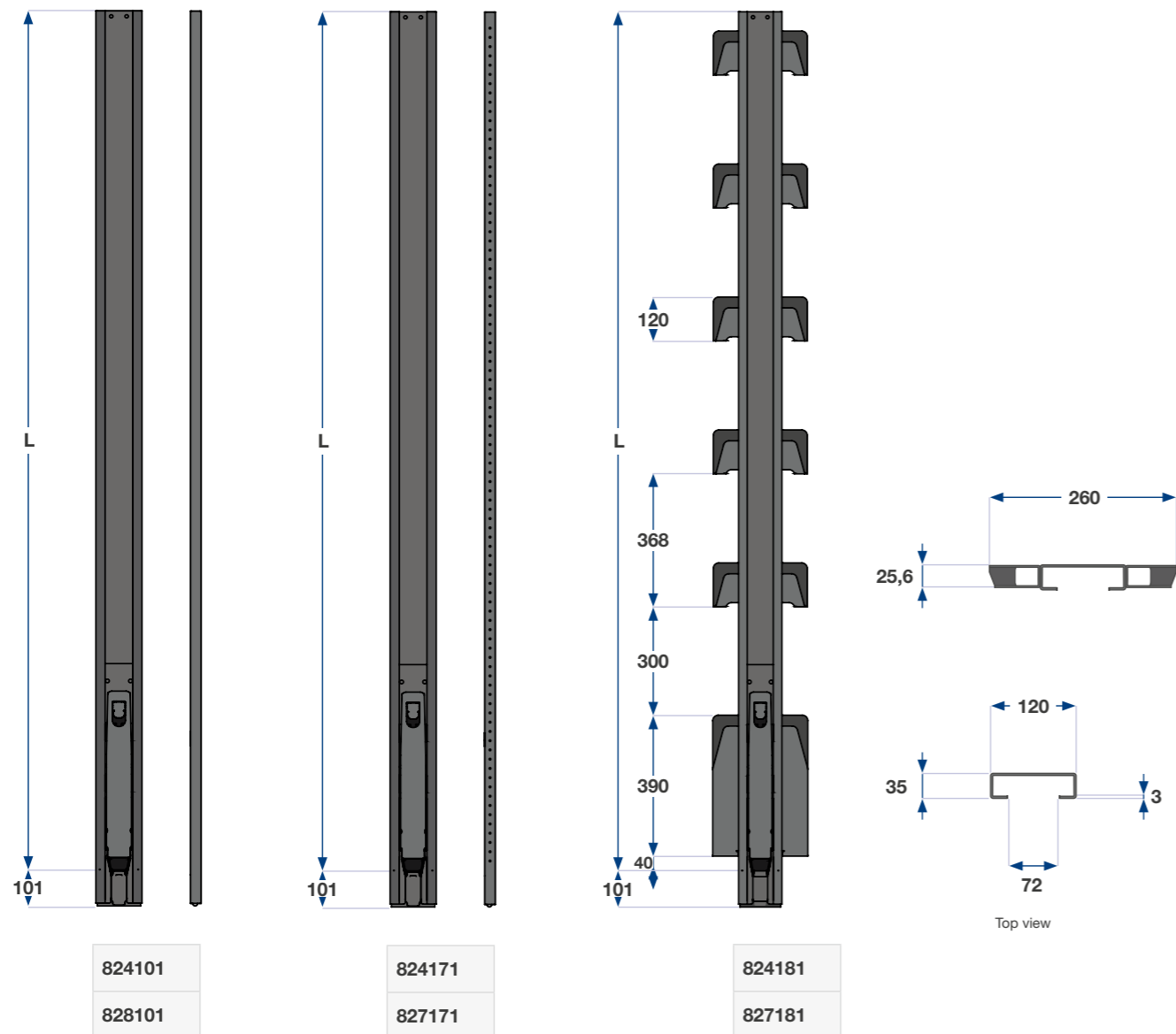
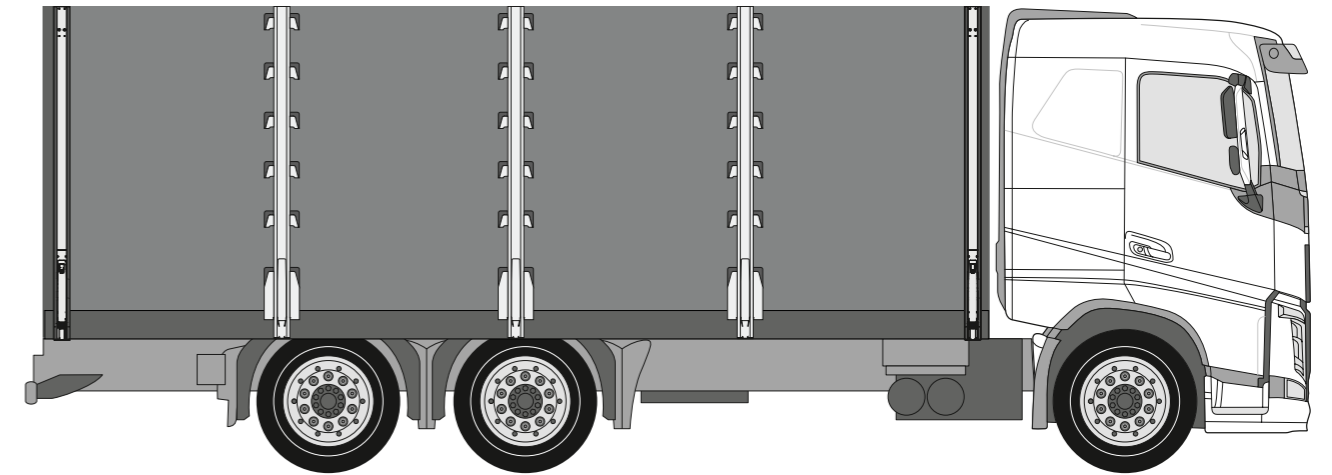
Fixed adjustment with top

Using a top enables adjustment of the pillar length in increments of 25 mm

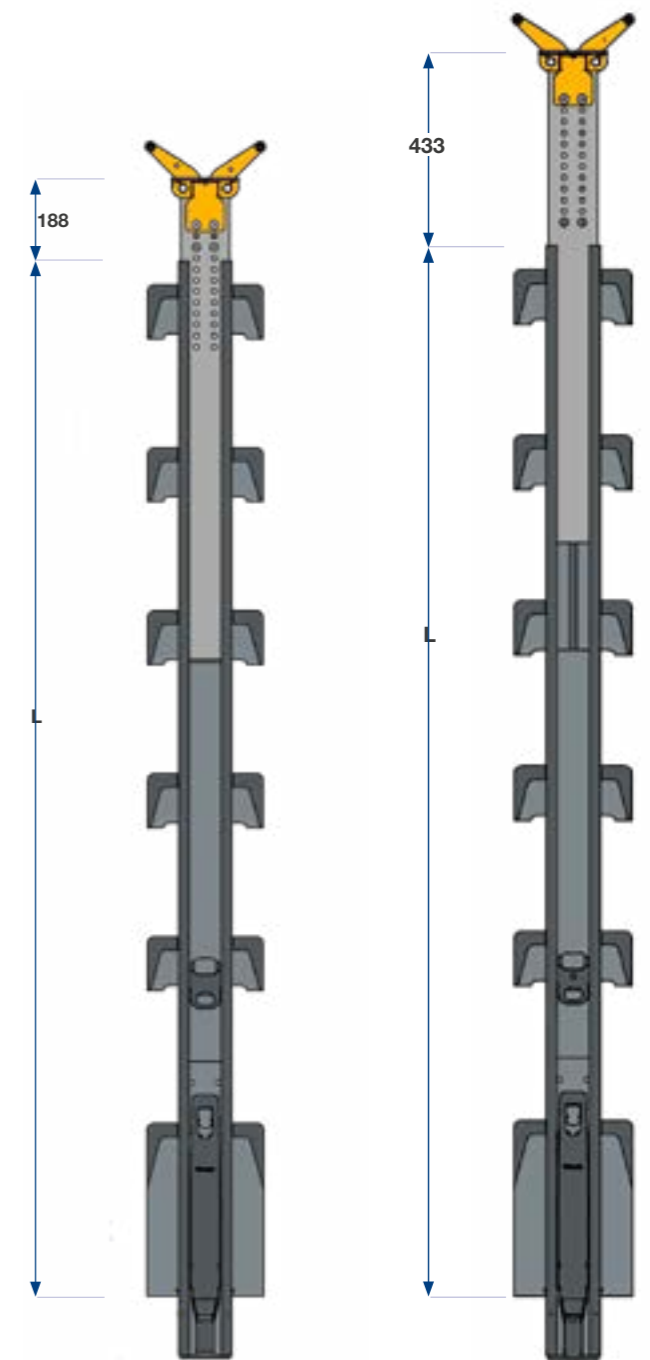
Product data

PART NO.	NAME	PLANK BRACKET	WEIGHT	LENGTH
824181	C10 Curtainsider 2400 plank bracket	3 pcs 450 mm	22,00 kg	2400 mm
827181	C10 Curtainsider 2700 plank bracket	4 pcs 450 mm	25,00 kg	2700 mm
824171	C10 Curtainsider 2400 for riveted plank brackets		22,00 kg	2400 mm
827171	C10 Curtainsider 2700 for riveted plank brackets		25,00 kg	2700 mm

Customization on request.



With trolley and top profile, the total length of the pillar increases by a minimum of 188 mm to a maximum of 433 mm



Accessories

PART NO.	DESCRIPTION
018500-07	C10 Pillar support, bolt-on model Fe/ZnFE8/P5/T2
018600	C10 Pillar support, weld-on model



018500-07



018600

PART NO.	DESCRIPTION
018536-01	C10 Key
072132	Bolt M8x16
018273-04	C10 Nut



018536-01



072132

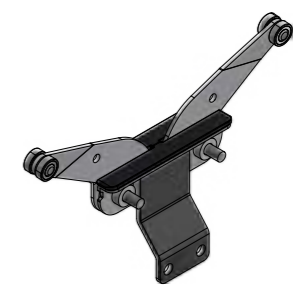
PART NO.	DESCRIPTION
018300-01	C10 Roller
018380-01	C10 Roller, reinforced
018480-01	C10 Roller (offset with stop)



018300-01



018380-01



018480-01

PART NO.	DESCRIPTION
018430H-01	C10 Plank bracket 120/90 26.5 Right riveted painted
018430V-01	C10 Plank bracket 120/90 26.5 Left riveted painted
018431H-01	C10 Plank bracket lower 390/360 26.5 Right riveted painted
018431V-01	C10 Plank bracket lower 390/360 26.5 Left riveted painted



018430H-01



018430V-01



018431H-01

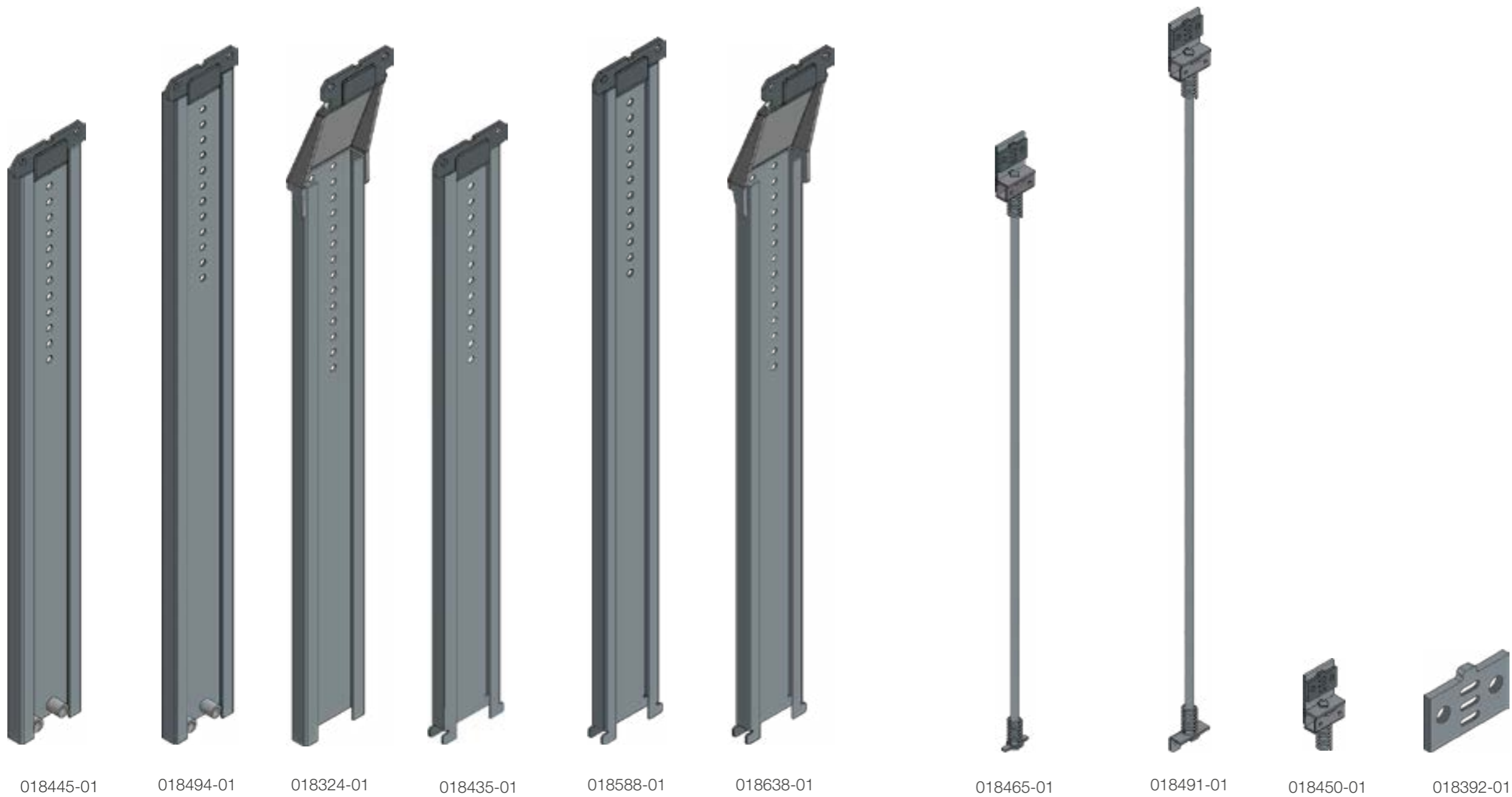


018431V-01

C10 CURTAINSIDER

PART NO.	DESCRIPTION	LENGTH
018445-01	C10 Top profile	900 mm
018494-01	C10 Top profile	1050 mm
018324-01	C10 Top profile offset	
018435-01	C10 Top profile riveted	900 mm
018588-01	C10 Top profile riveted	1050 mm
018638-01	C10 Top profile riveted	

PART NO.	DESCRIPTION	LENGTH
018465-01	C10 Spring kit 450 mm Elastic top	450 mm
018491-01	C10 Spring kit 600 mm Elastic top	600 mm
018451-01	C10 Pillar top connection with lock washer	
018392-01	C10 Adjustment plate for Pillar top connection in step of 5 mm	





C10 CURTAINSIDER

Material

<p>Product family C10 Curtainsider pillar</p>	<p>Strength/Certificate Certified to EN 12642 - DEKRA</p>
<p>Applications Pillar for body vehicles with full side curtain.</p>	<p>Quality Kinnegrip is certified to ISO 9001:2015 ISO 14000:2015</p>
<p>Material Steel (HSLA) a hot-rolled, high-strength, low-alloy material that has uniform quality and excellent machining properties.</p>	<p>Maintenance We recommend soap products with a pH of 6-8 to be used (do not use pro-ducts containing chlorine). After cleaning, rinse surfaces with water. The mechanism and moving parts should be lubricated regularly.</p>
<p>Surface treatment The product is available in ED-coated design, electrocoating which gives good penetration into cavities and even layers and high finish. To obtain an optimal corrosion protection, ED coating must always be reinforced with subsequent powder coating.</p>	<p>Environmental impact & recycling Kinnegrip AB is environmentally certified to ISO 14001. This means that we have control of our routines, conduct active environmental work and constantly strive to minimize our impact on the environment. Kinnegrip's products are manufactured from steel and aluminium, which means that they can be recycled completely. Of course, we choose materials based on IMDS*, a system that allows us to comply with international standards, laws and regulations.</p>

* IMDS (International Material Data System) is the automotive industry's material data system and has become a global standard used by nearly all global OEM manufacturers. IMDS collects all materials used for automotive production, maintenance, analysis and archiving. Using IMDS enables the producer to fulfil the obligations imposed on vehicle manufacturers, and thus on their suppliers, according to national and international standards, laws and regulations.



 Kinnegrip AB
Lindhagsgatan 6
531 40 Lidköping
SWEDEN

 +46 510 890 00
 info@kinnegrip.se



Find our products at our
local distribution partners

 kinnegrip.se



Kinnegrip.
SAFETY ON THE ROAD