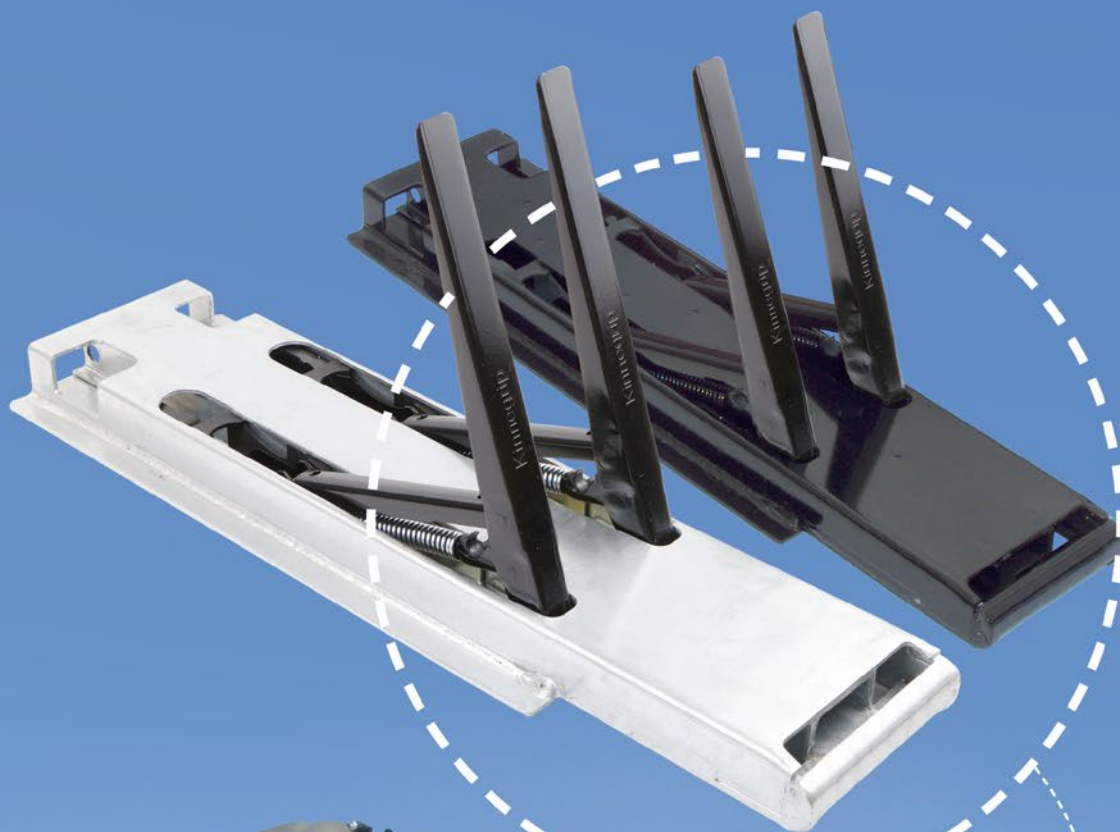




2024/09/10



MILITARY SUPERSTRUCTURES ALUMINIUM PILLARS K20



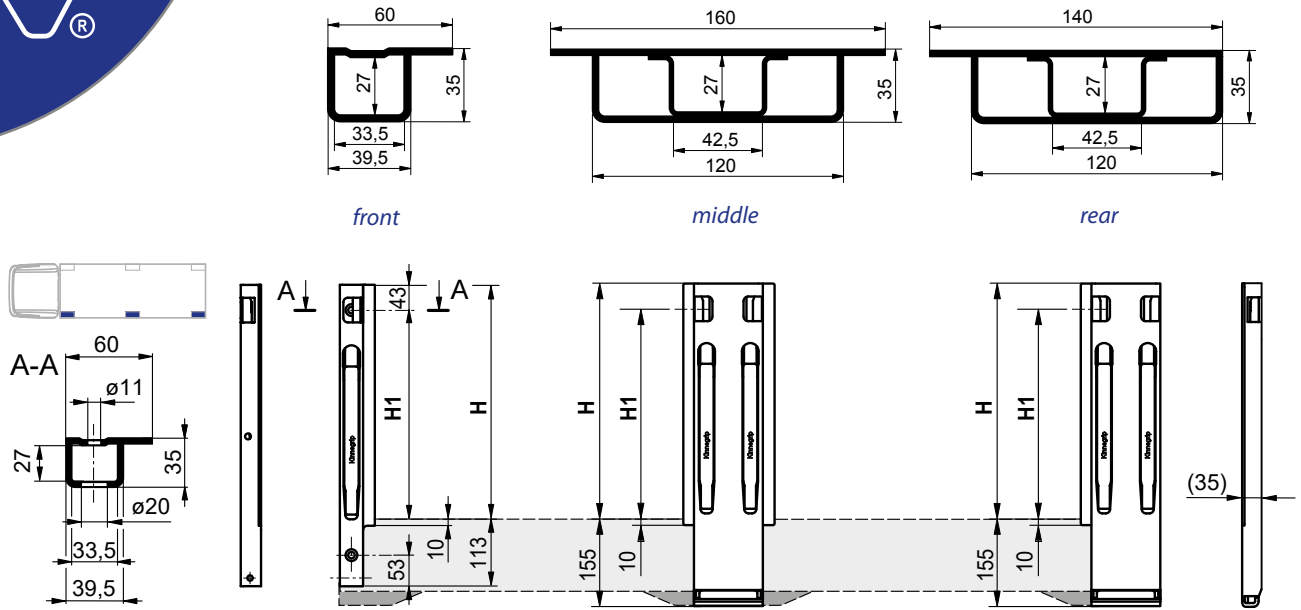
Subject to technical changes.

www.alu-sv.com

ALU-SV CZ ČESKO: Průmyslová 1445/2, 102 00 Praha 10, Tel.: +420 266 090 511

1/8

K20 PILLARS - 1 LOCK



WAY OF MOVEMENT



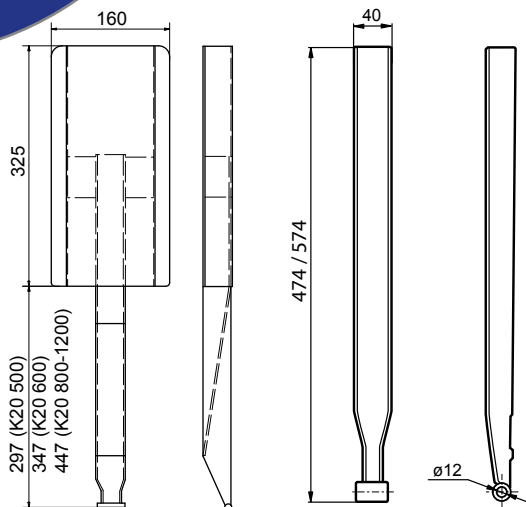


H [mm]	H1 [mm]	Part	Catalogue No.	Position	Weight [kg]
400	357	front	2300204301	L	2,500
			2300204401	P/R	2,500
		middle	2300204201		7,900
		rear	2300204901	L	7,700
			2300204001	P/R	7,700
500	357	front	2300205301	L	2,800
			2300205401	P/R	2,800
		middle	2300205201		8,900
			2300205231	+ KT	8,600
		rear	2300205901	L	8,700
			2300205001	P/R	8,700
600	457	front	2300206301	L	3,170
			2300206401	P/R	3,170
		middle	2300206201		9,800
			2300206231	+ KT	9,500
		rear	2300206001	P/R	9,600
2300206001	P/R		9,600		
800	657	front	2300208341	L	4,100
			2300208441	P/R	4,100
		middle	2300208241		12,100
			2300208251	+ KT	11,800
		rear	2300208941	L	11,700
			2300208041	P/R	11,700

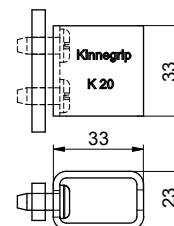
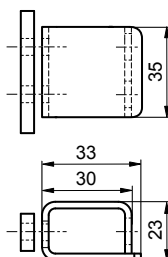
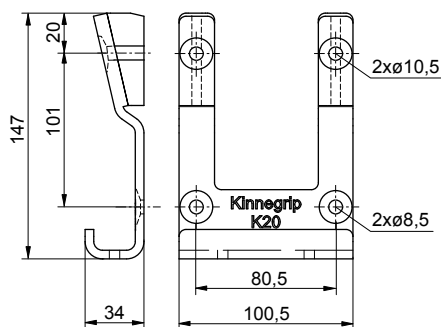
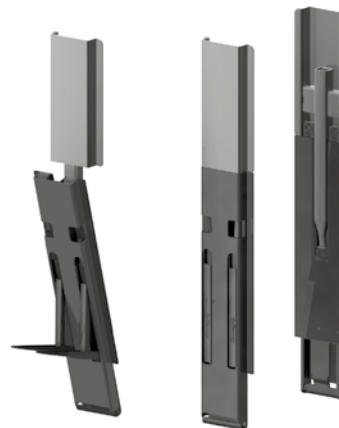
*Pillar KT20 with KT**Pillar KT20 without KT**KT - with connection for tarpaulin construction*

Related components

Catalogue No.	Name	Weight [kg]
2300012158	Kinnetop extension 500mm	3,610
2300012159	Kinnetop extension 600mm	3,610
2300012160	Kinnetop extension 800 -1200mm	4,120



2300012474
2300012574



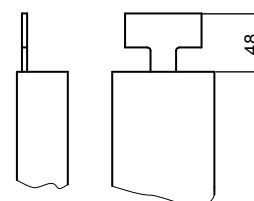
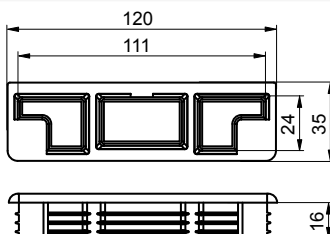
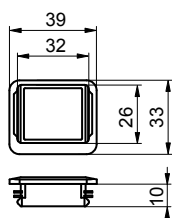
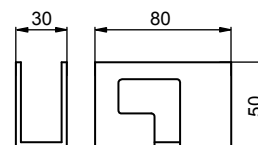
2300032019	zn
Socket K20 screw-on	
steel	0,530 kg pc

2300032024	zn
Keeper K20 without screws	
steel	0,090 kg ks

2300032022	zn
Keeper K20 set rear	
steel	0,110 kg pc

2300032020	
Socket K20 weld-on	
steel	0,530 kg pc

2300032025	zn
Screw M8x16 ISO 7380	
steel	0,008 kg pc



2300032164	
Cover K20 front plastic	
plastic	0,100 kg pc

2300032165	
Cover K20 rear plastic	
plastic	0,200 kg pc

2300011012	
Top joint set	
steel	0,308kg pc



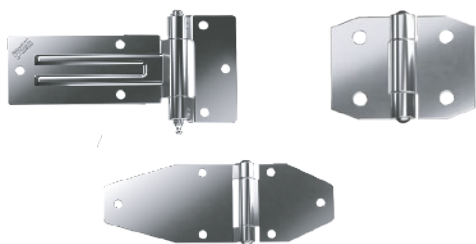
Our equipment offer dedicated to defense vehicles

Couplings



- ▮ R55 homologated
- ▮ Robust and reliable design
- ▮ Fixed and rotating version

Stainless steel hinges



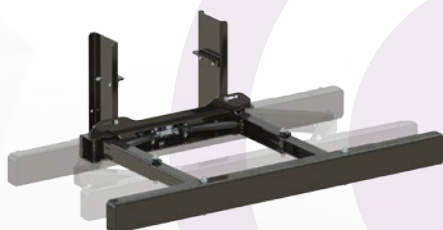
- ▮ Full surface treatment
- ▮ High quality austenitic stainless steel
- ▮ Greaser and removable pin versions

Lifting assistance



- ▮ Lifting torque adapted to various opening types
- ▮ Robust and reliable design
- ▮ High capacity version for heavy openings

Underrun bars



- ▮ R58-03 homologated
- ▮ Robust and reliable design
- ▮ Adapted to various chassis types

Lashing rings

- STANAG 3548 and EN29367-2 compliant for transport by air and by sea
- Easy to install
- Robustness and durability



Handles

- Ergonomic design
- Robust and reliable
- One solution for every locking need



Internal lighting

DM-CL

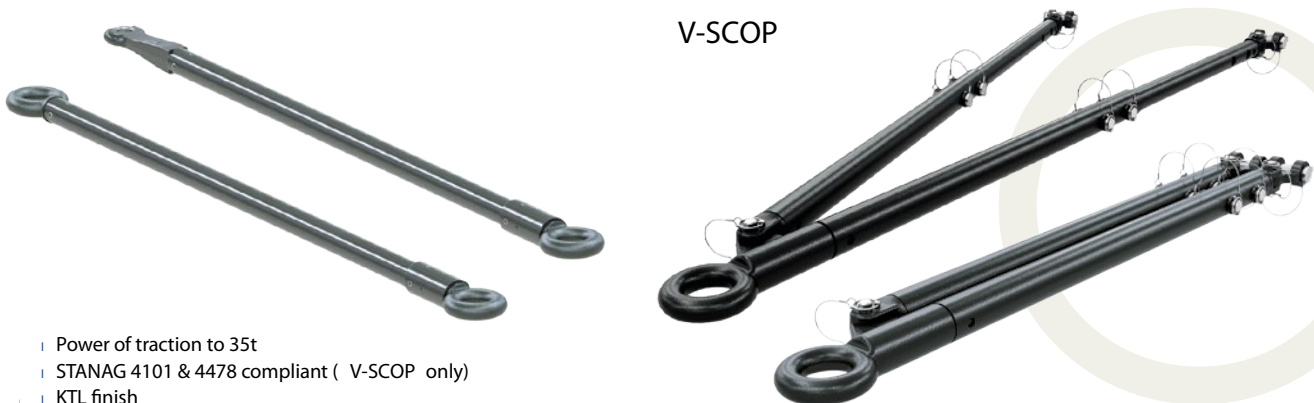
- IP67
- Operating temperature -30°C / 80°C
- light intensity 4 - 520 lux
- Prioritised tactical lighting mode (blue, red ...)
- Dimmer version available
- Robust design complying with MIL-STD standards



Towing bar

V-SCOP

- Power of traction to 35t
- STANAG 4101 & 4478 compliant (V-SCOP only)
- KTL finish





TOOLBOXES



5095044481	RAL 6007
Box 700x300x300 RAL6007 no holders	
PE-HD	3,700 kg pc



5095044484	RAL 6007
Box 840x480x485 RAL6007 no holders	
PE-HD	3,700 kg pc



RAL6007, PE-HD plastic resistant to impact even in frost, in army khaki color

